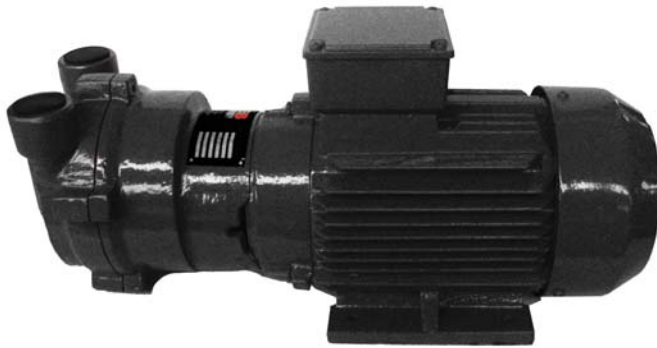




NCC SERIES

Close-Coupled Liquid Ring Vacuum Pumps

MODELS: 2-HP UP TO 25 HP



2.0 HP TO 7.5 HP (NCC-20,35,55,75)



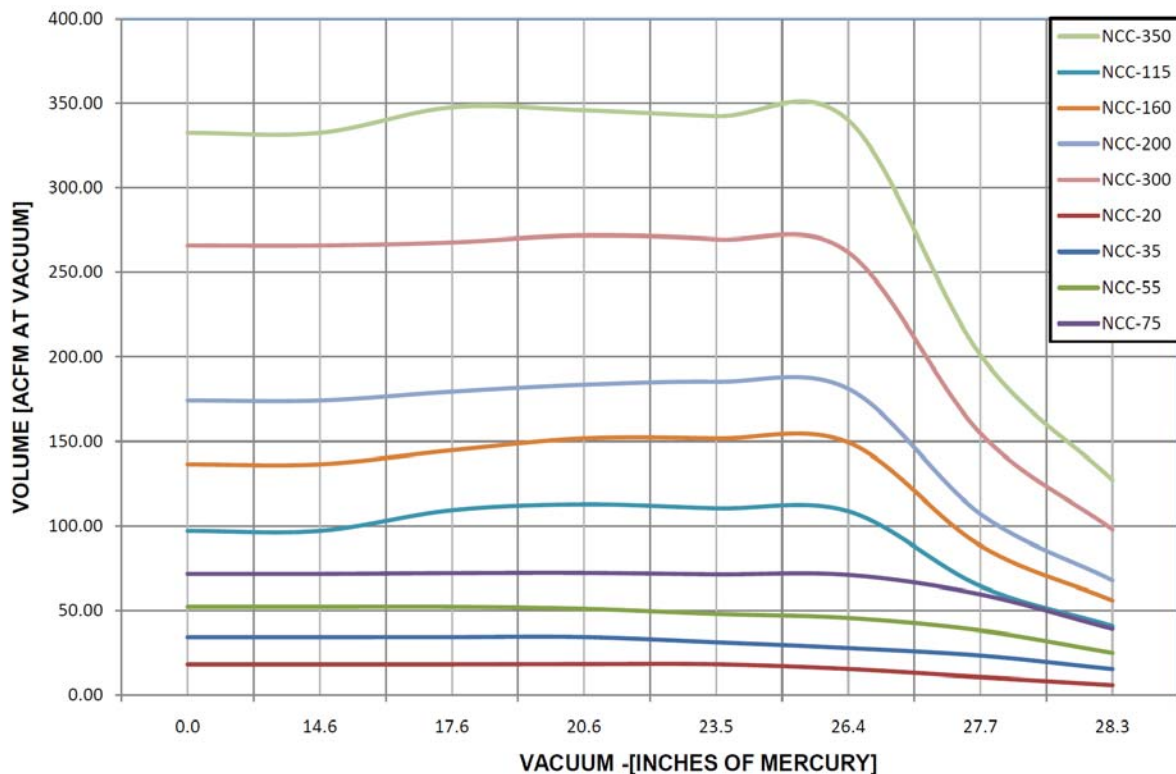
7.5HP TO 25 HP (NCC-115,160,200,300, 350)

Features:

- Non-contact Liquid Ring operation for extended life span.
- Extremely robust against moisture/debris/contamination carry-over.
- Compact close-coupled design reduces size, cost, & maintenance.
- Fast delivery on standard construction pumps.
- Explosion proof motors & stainless steel construction options available.

Materials of Construction:

- Housing & Cover - Cast Iron standard; 304 SS optional.
- Rotor - Bronze standard; 304 SS optional.
- Mechanical Seal; Viton Standard or NBR.
- Motor: IP55; Class F Insulation 208 or 460/3/60 volt/TEFC; Explosion Proof class I optional.

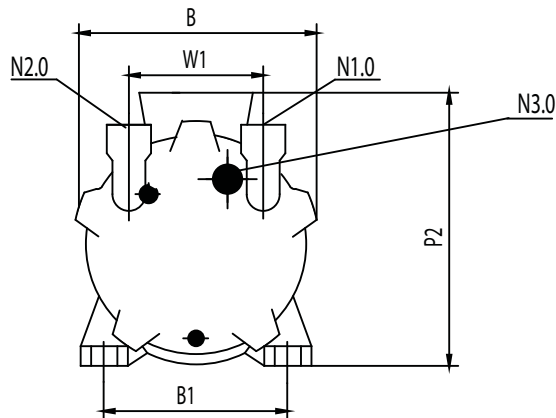
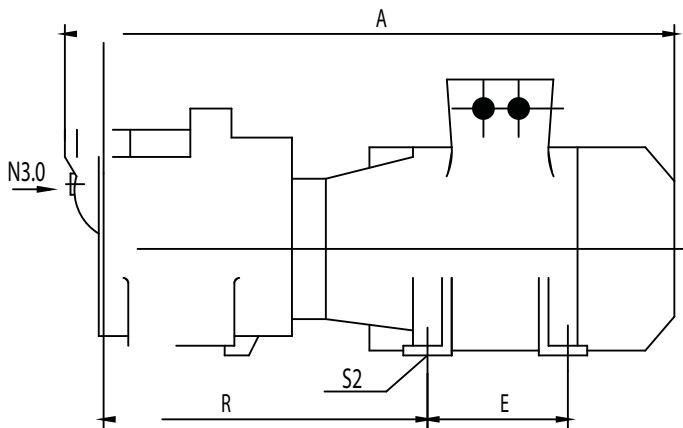




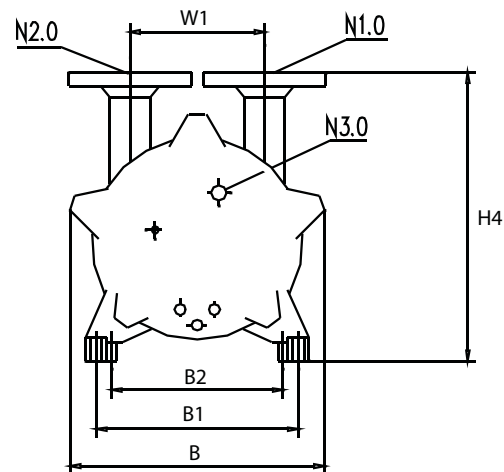
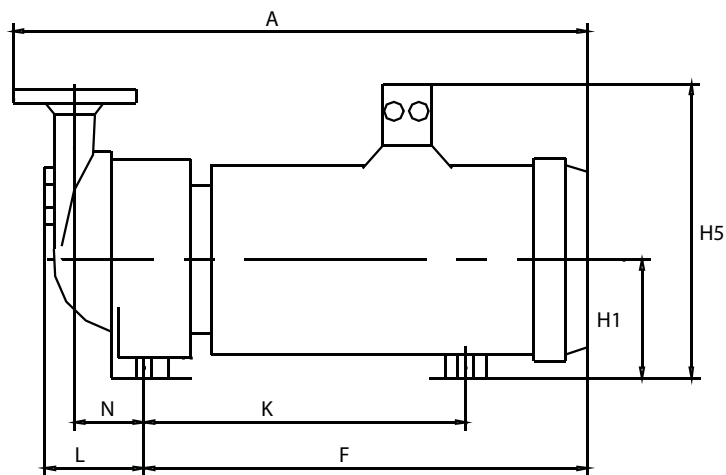
NCC SERIES

Close-Coupled Liquid Ring Vacuum Pumps

MODELS: 2-HP UP TO 25 HP



P/N	[HP]	CFM	Wt. [lbs]	Noise [dB]	A	B	B1	E	P2	R	S2	W1	N1.0, N2.0	N3.0
NCC-20	2.0	18.0	75.0	69.0	17.91	7.32	5.51	3.94	9.84	8.54	0.394	4.33	1" NPT	1/4" NPT
NCC-35	3.0	34.0	79.0	69.0	19.72	7.32	5.51	4.92	9.84	9.29	0.394	4.33	1" NPT	1/4" NPT
NCC-55	5.0	56.0	150.0	75.0	22.44	8.78	7.48	5.51	11.81	9.92	0.472	4.33	1-1/2" NPT	1/4" NPT
NCC-75	7.5	77.0	168.0	77.0	35.67	9.84	8.66	7.87	12.60	9.13	0.472	4.33	1-1/2" NPT	3/8" NPT



P/N	[HP]	CFM	Wt. [lbs]	Noise [dB]	A	B	B1	B2	K	N	W1	H4	L	F	N1.0, N2.0	N3.0
NCC-115	7.5	113.0	231.0	74.0	25.45	12.80	10.43	8.50	12.48	3.62	7.09	14.61	5.12	18.27	2" FLANGE	3/4" NPT
NCC-160	10	157.0	269.0	74.0	29.29	12.80	10.43	8.50	16.54	3.62	7.09	14.61	5.12	22.52	2" FLANGE	3/4" NPT
NCC-200	15	192.0	342.0	78.0	32.36	13.66	12.00	8.50	18.11	3.82	7.87	16.14	5.59	25.20	2-1/2" FLANGE	3/4" NPT
NCC-300	20	272.0	428.0	78.0	36.22	14.84	11.81	10.00	20.10	4.06	7.87	16.81	5.79	28.60	2-1/2" FLANGE	3/4" NPT
NCC-350	25	342.0	721.0	77.0	41.10	18.86	14.57	10.98	22.44	5.43	9.84	20.51	7.91	31.81	3" FLANGE	3/4" NPT