



N-1256 Liquid Ring Vacuum Pump

Description: **Single-Stage Liquid Ring Compressor**

Type: **Conical, Dual Lobe**

Models: **N-1256**

Power Range: **100-125 HP**

Capacity Range: **400-425 SCFM**

Max Pressure: **80 PSIG**

Overview

Our N-1256 compressor is the ideal high quality replacement for the classic Nash* 1256 liquid ring compressor. This compressor has been engineered to meet or exceed OEM performance requirements. Often used in corrosive environments it is constructed of solid 316 SS or cast iron with optional mechanical seals. This compressor is designed to be a drop in replacement for classic Nash* 1256 compressors. NES pumps are factory performance tested and include a 2 year warranty.

Features

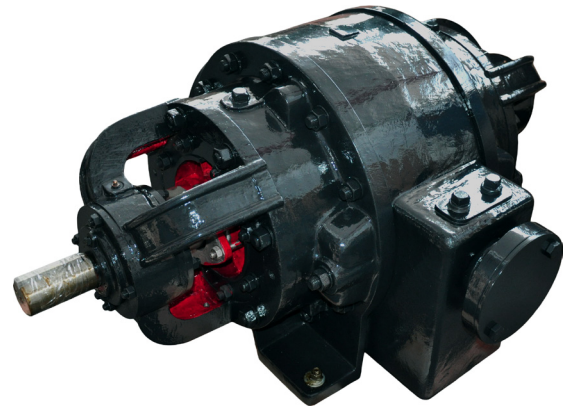
- Drop-in replacement for classic Nash* 1256 compressor.
- Standard construction is 316 stainless steel with teflon packing.
- Optional cast iron construction.
- Optional factory installed mechanical seals.
- Parts and repair kits available to fit Nash* 1256 compressor.
- Available in bare pump, direct drive or V-belt systems.
- 2 year factory warranty.

Materials of Construction

- Housing & Heads - 316 stainless steel standard; cast iron optional.
- Rotor - 316 stainless steel standard; cast iron optional.
- Cones - 316 stainless steel standard; cast iron optional.
- Shaft - 316 stainless steel standard; 304 SS optional.
- Seal – Teflon packing; mechanical seals optional.

Applications

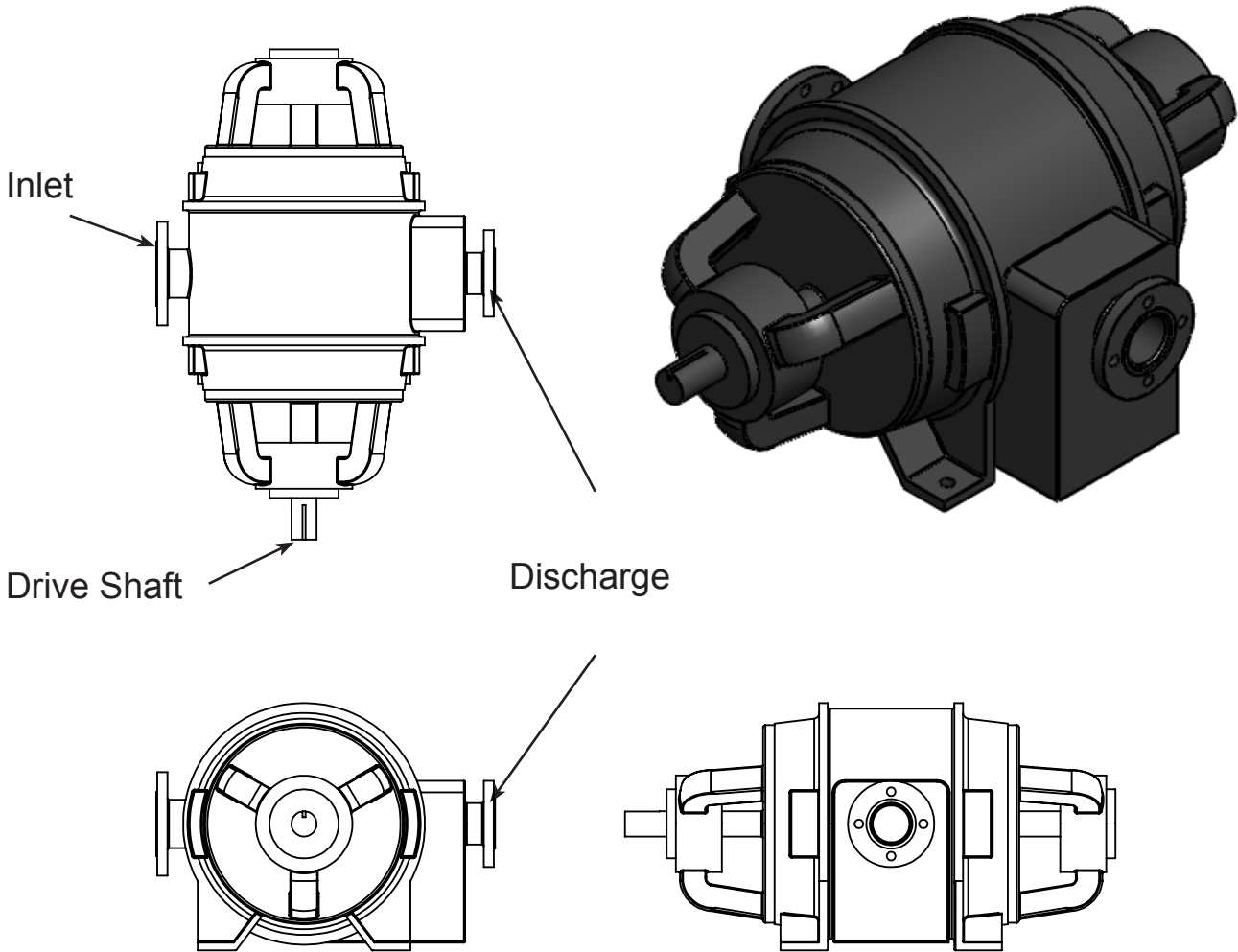
- Liquid chlorine compressor
- Dry chlorine conveying
- 96-98% strong sulfuric acid
- Biogas compression





N-1256 Liquid Ring Vacuum Pump

Model	Max Pressure [PSIG]	Speed [RPM]	Max Capacity [SCFM] @ 50 PSIG	Capacity [SCFM] @ 80 PSIG	Motor Power [HP]	Inlet [in]	Disch. [in]	Pump Weight Dry [lbs.]
N-1256	80	1750	425	400	150	4 FL	3 FL	1200



TYPICAL N-1256 SERIES LAYOUT

See pump drawing for more details & dimensions

*Nash is a registered trade mark of Gardner Denver Nash. NES Company Inc. has no affiliation with Nash, Nash Engineering or Gardner Denver Nash. The information contain herein is provided as a convenience and for informational purposes only. Performance data are subject to manufacturing variation and test conditions including but not limited to atmospheric pressure, ambient temperature, seal fluid temperature, tolerances, and materials of construction. Performance of pumps constructed fully or partially of stainless steel may be lower due to larger clearance settings. This information may contain inaccuracies, errors or omissions. All NES Company Inc. supplied products and recommendations or suggestions must be evaluated by the end user to determine applicability and suitability for any particular use. See NES Company Inc. terms & conditions of sale for additional details which may also apply.

NES Company Inc.
60 Park Place/Suite 1106
Newark, NJ 07102

(800) 297-3550
www.nescompany.com
info@nescompany.com

N-1256 Liquid Ring Vacuum Pump

© 2013-14 NES Company Inc.
All rights reserved
Rev: 1014.1